



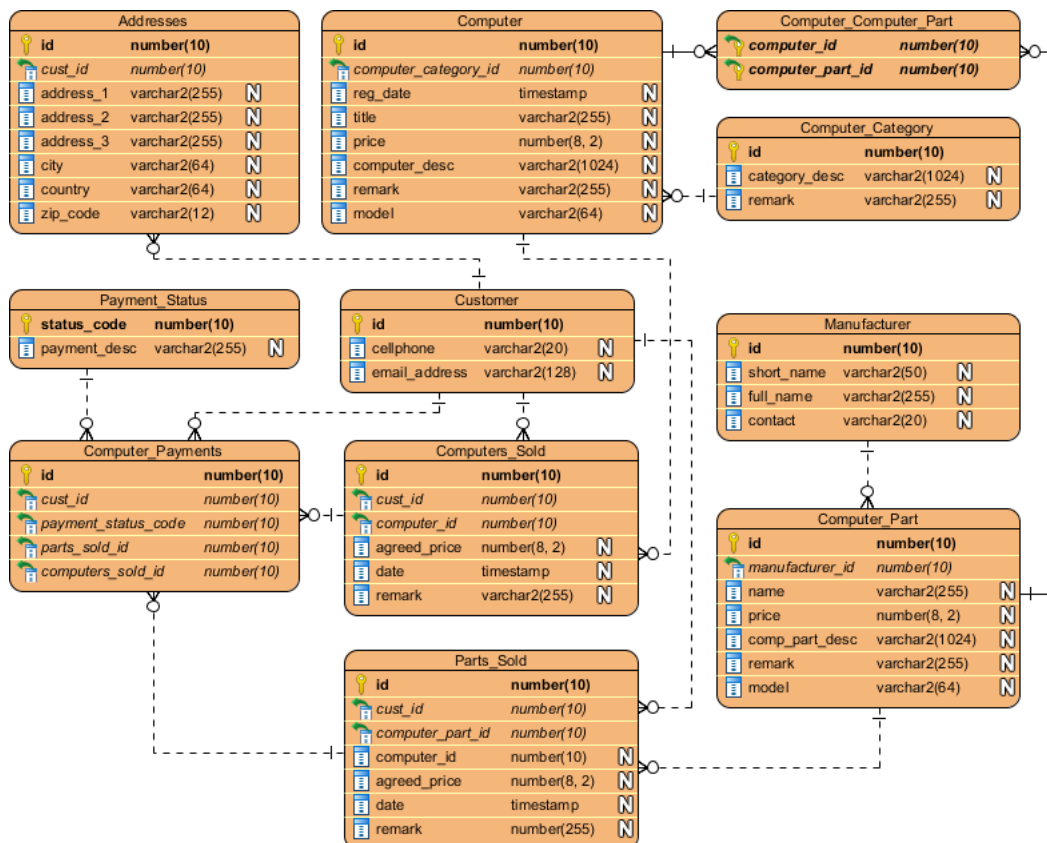
Comparing Database Schemas Visually

Written Date : September 1, 2009

Overview

1. Make a copy of the current ERD (version 1.0).
2. Modify the ERD.
3. Compare the changes from version 1.0 to the latest version.

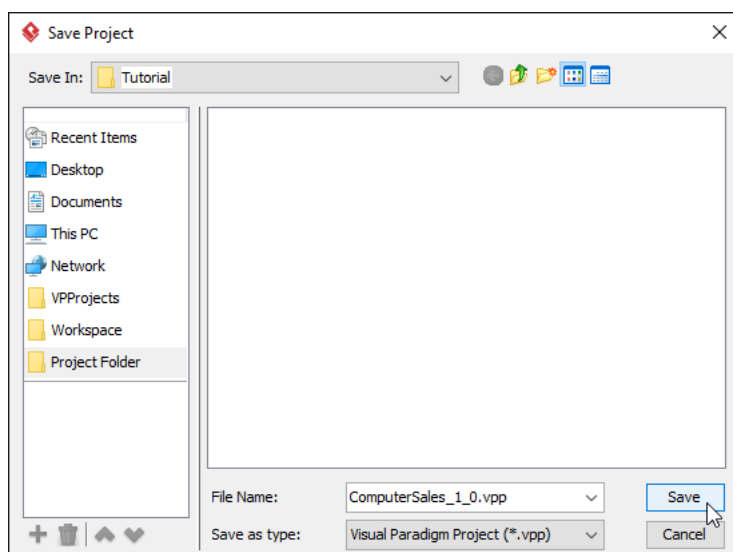
Here is the database design for the *Computer Sales* project. We will modify it and then compare it with the original copy.



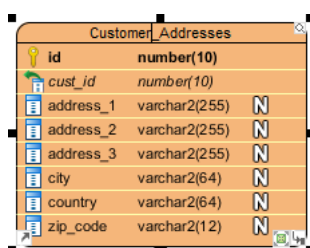
Using Visual Diff

1. Download [ComputerSales.vpp](#). You can also find this file at the bottom of this tutorial.
2. Open the downloaded .vpp file in Visual Paradigm. To open a project, select **Project > Open** from the application toolbar.

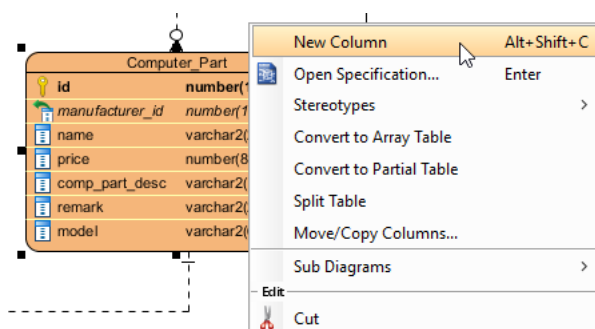
- Let's make a copy of the existing project by selecting **Project > Save > Save as** from the application toolbar.
- Name the new project **ComputerSales_1_0.vpp** and click **OK**.



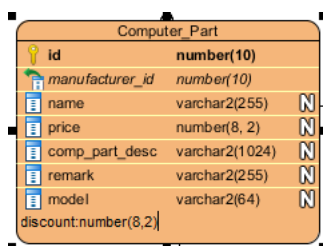
- Reopen the previous project by selecting **Project > Open > ..\ComputerSales.vpp**.
- Make a few changes to the project. Rename the *Addresses* entity to *Customer_Addresses*.



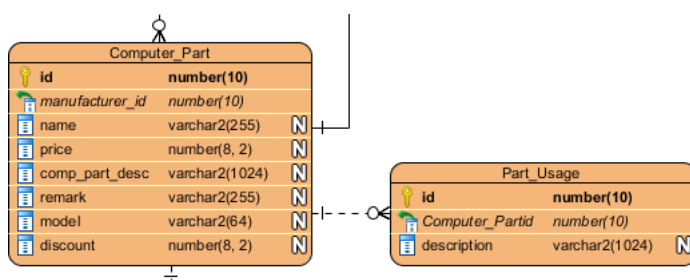
- Add a new column to the *Computer_Part* entity by right-clicking on it and selecting **New Column** from the main menu.



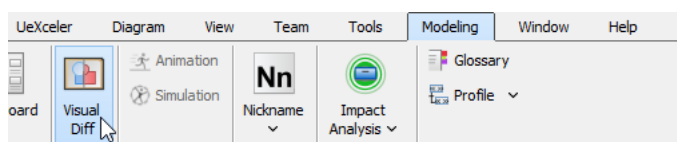
- Enter *discount : number(8, 2)* as the column definition, press **Enter**, and then press **Esc** to confirm the edit.



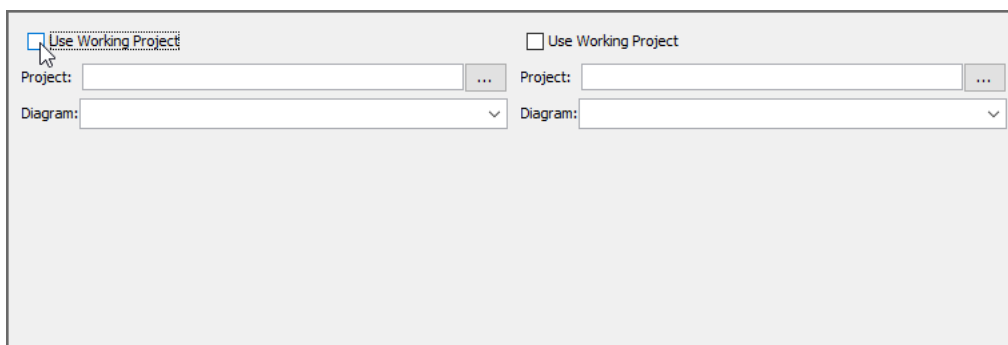
- Create an entity with a **One-to-Many Relationship -> Entity** relationship from *Computer_Part*. Name the entity *Part_Usage*.
- Add the following columns to *Part_Usage*:
 - +id : number(10)**
 - description : varchar2(1024)**



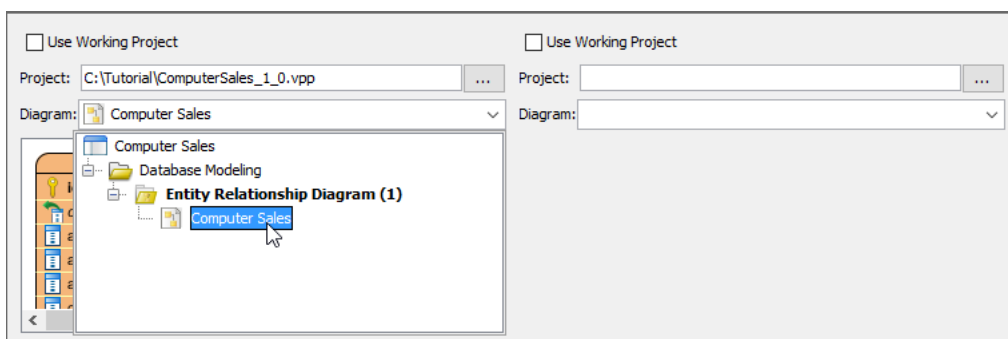
- Open **Visual Diff** by selecting **Modeling > Visual Diff** from the application toolbar.



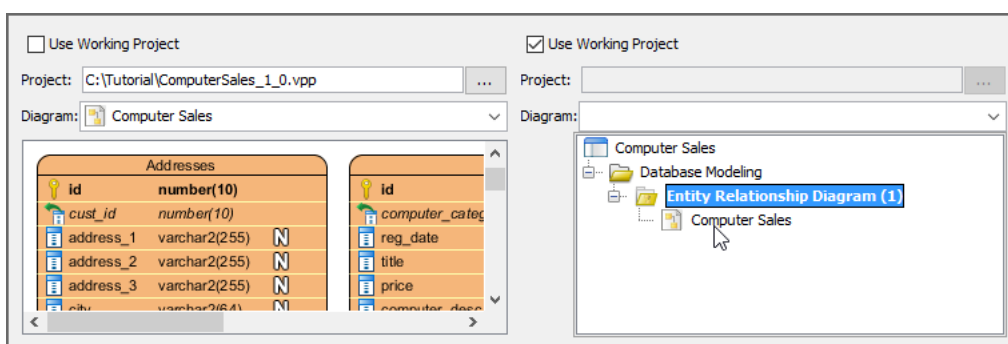
- In the Visual Diff window, uncheck **Use Working Project** on the left-hand side.



- Click ..., select **ComputerSales_1_0.vpp**, and then select *Computer Sales* as the diagram.



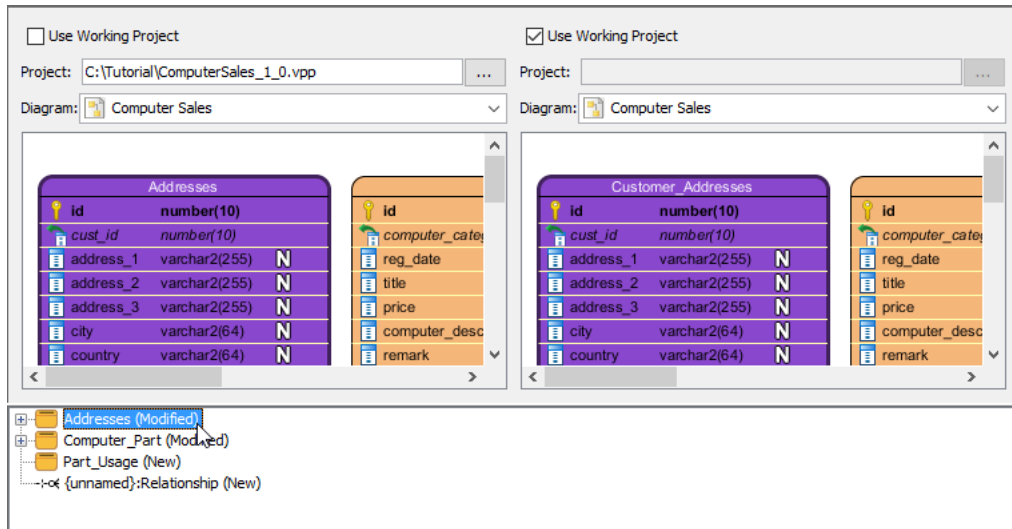
- Check **Use Working Project** on the right-hand side. Select *Computer Sales* as the diagram on the right-hand side.



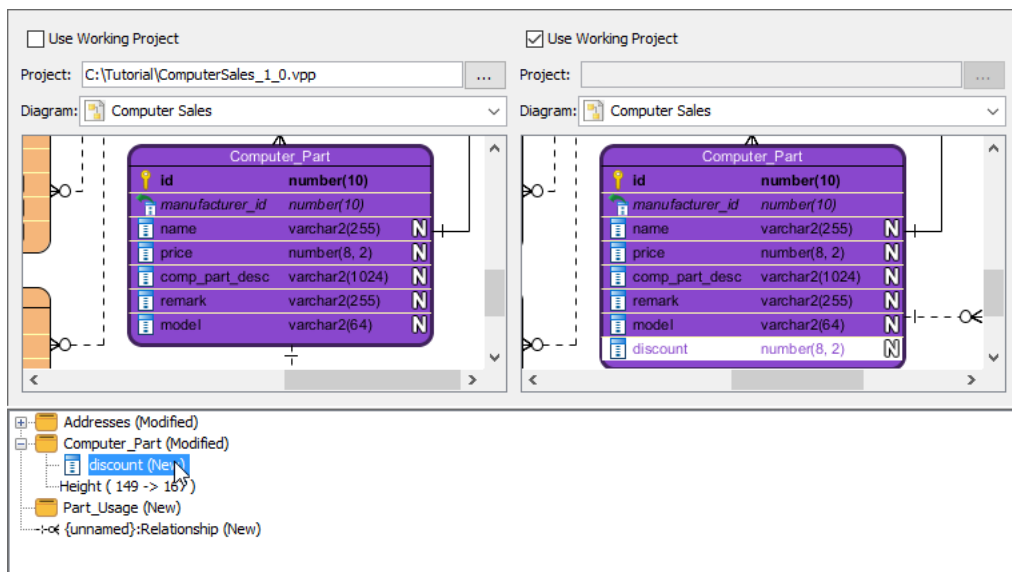
- The differences between the diagrams are listed at the bottom of the window.

16. Select the differences one by one to see the changes.

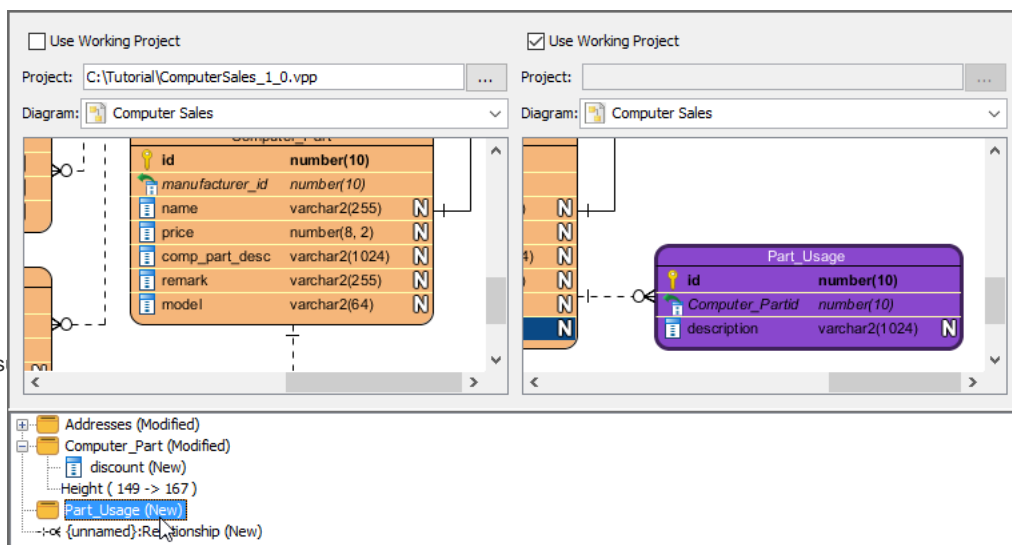
- Addresses entity



- New column



- New associated entity



Resources

1. [ComputerSales.vpp](#)

Related Links

- [Tutorial - Compare Logical and Physical ERD](#)
- [FREE database design training - Database Design and Management](#)
- [What is Entity Relationship Diagram \(ERD\)?](#)

Trademark Disclaimer

Oracle is a registered trademark of Oracle Corporation in the U.S. and other countries.



Visual Paradigm home page
(<https://www.visual-paradigm.com/>)

Visual Paradigm tutorials
(<https://www.visual-paradigm.com/tutorials/>)