



## How to Use Diagram Info Shape?

Written Date : June 24, 2015

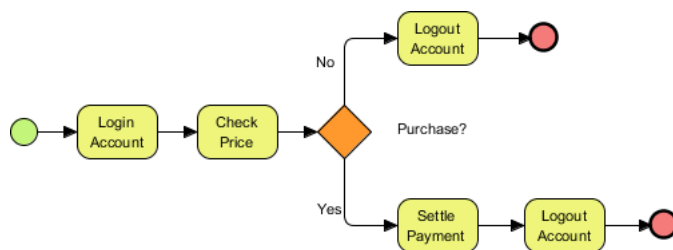
### Overview of this Tutorial

In this tutorial, you will learn how to use the Diagram Info Shape to display the description and Version (Project Management) of a Business Process Diagram (BPD).

To complete this tutorial, you must have Visual Paradigm installed and possess basic knowledge of modeling with Visual Paradigm.

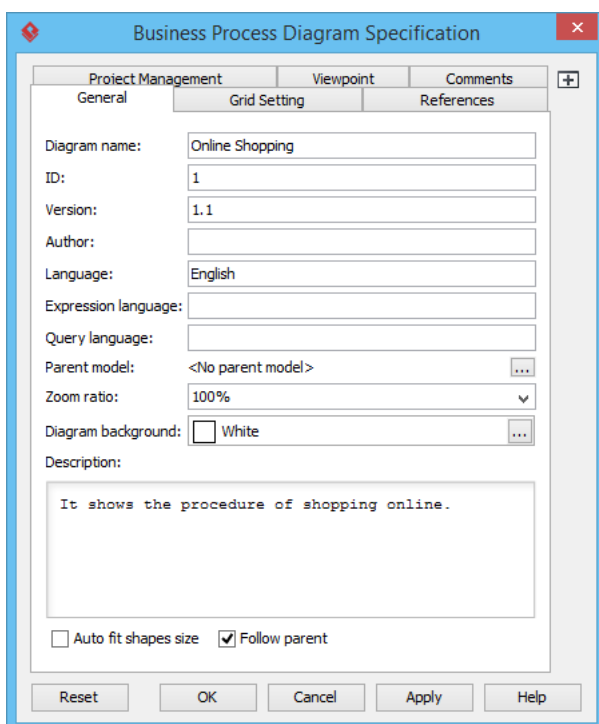
### Using the Diagram Info Shape

1. Download [Online-Shopping.vpp](#). You can also find this file at the bottom of this tutorial, under the **Resources** section.
2. Open the downloaded project file in Visual Paradigm.
3. Open the Business Process Diagram *Online Shopping*. You should see the class diagram below:

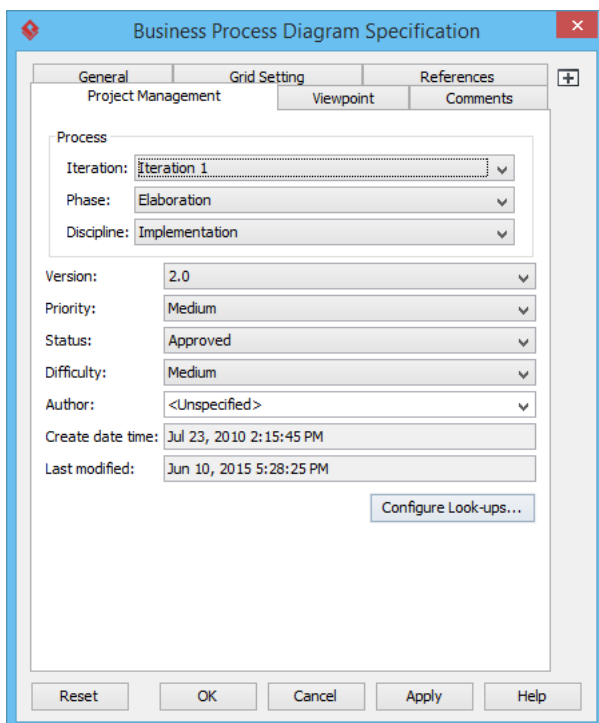


4. Before adding a Diagram Info Shape to the diagram, let's quickly review what we have specified in this diagram. Right-click on the background of the diagram and select **Open Specification...** from the popup menu.

5. In the **General** tab of the specification window, you can see the description entered.

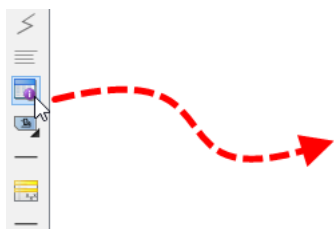


6. Open the **Project Management** tab. Some of the properties have been set.

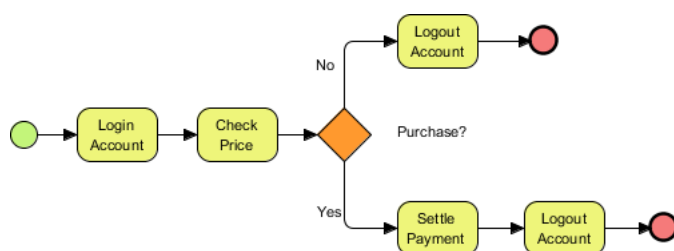


7. Click **OK** to return to the diagram.

- Let's use a Diagram Info Shape to display the diagram description and Version (Project Management) on the diagram. From the diagram toolbar, drag **Diagram Info** and drop it onto the diagram.

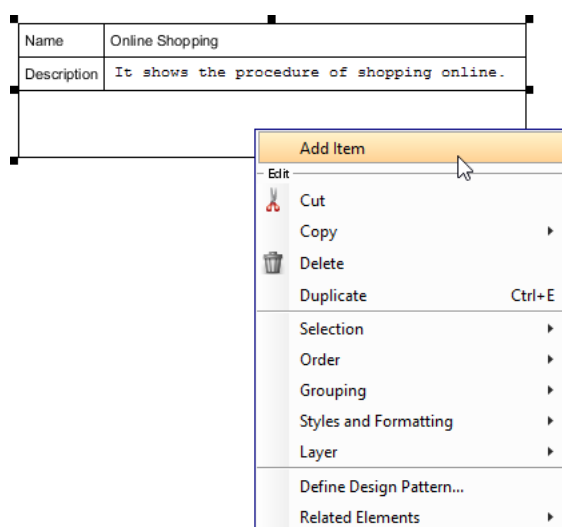


- The Diagram Info Shape is created with two rows: **Name** and **Description**. Move the Diagram Info Shape to the bottom right corner of the diagram.



Name	Online Shopping
Description	It shows the procedure of shopping online.

- Let's add a row to the Diagram Info Shape. Right-click on the shape and select **Add Item** from the popup menu.



11. Enter "Version" as the row name.

Name	Online Shopping
Description	It shows the procedure of shopping online.
Version	

12. Let's fill in the version number. Instead of hard-coding the version, you can retrieve it dynamically using a variable. Double-click on the adjacent cell and enter `&#36;{pmVersion}`.

Name	Online Shopping
Description	It shows the procedure of shopping online.
Version	<code>&amp;#36;{pmVersion}</code>

13. Click on the background of the diagram to confirm editing. You can see "2.0" is shown:

Name	Online Shopping
Description	It shows the procedure of shopping online.
Version	2.0

### List of Available Variables

Besides `&#36;{pmVersion}`, here is a list of variables you can use in the Diagram Info Shape for showing the actual values of Project Management properties specified:

Project Management Property	Variable
Iteration	<code>&amp;#36;{pmIteration}</code>
Phase	<code>&amp;#36;{pmPhase}</code>
Discipline	<code>&amp;#36;{pmDiscipline}</code>
Version	<code>&amp;#36;{pmVersion}</code>
Priority	<code>&amp;#36;{pmPriority}</code>
Status	<code>&amp;#36;{pmStatus}</code>
Difficulty	<code>&amp;#36;{pmDifficulty}</code>
Author	<code>&amp;#36;{pmAuthor}</code>
Create date time	<code>&amp;#36;{pmCreateDateTime}</code>

Last modified	&#36; {pmLastModified}
---------------	---------------------------

Here is a list of variables for retrieving general properties:

Property	Variable
Name	&#36;{nickname}
Description	&#36;{description}
Teamwork Project Revision	&#36; {teamworkRevision}

#### Resources

1. [Online-Shopping.vpp](#)

#### Related Links

- [Code Engineering features in Visual Paradigm](#)
- [State Machine Diagram feature description](#)



Visual Paradigm home page  
(<https://www.visual-paradigm.com/>)

Visual Paradigm tutorials  
(<https://www.visual-paradigm.com/tutorials/>)