

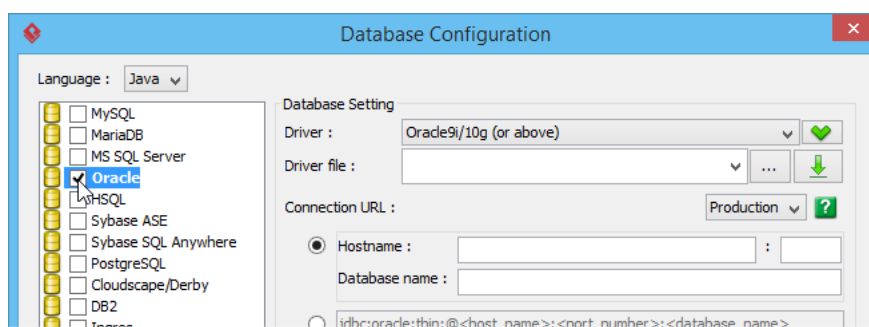


## Generate Hibernate Mapping for Oracle Database

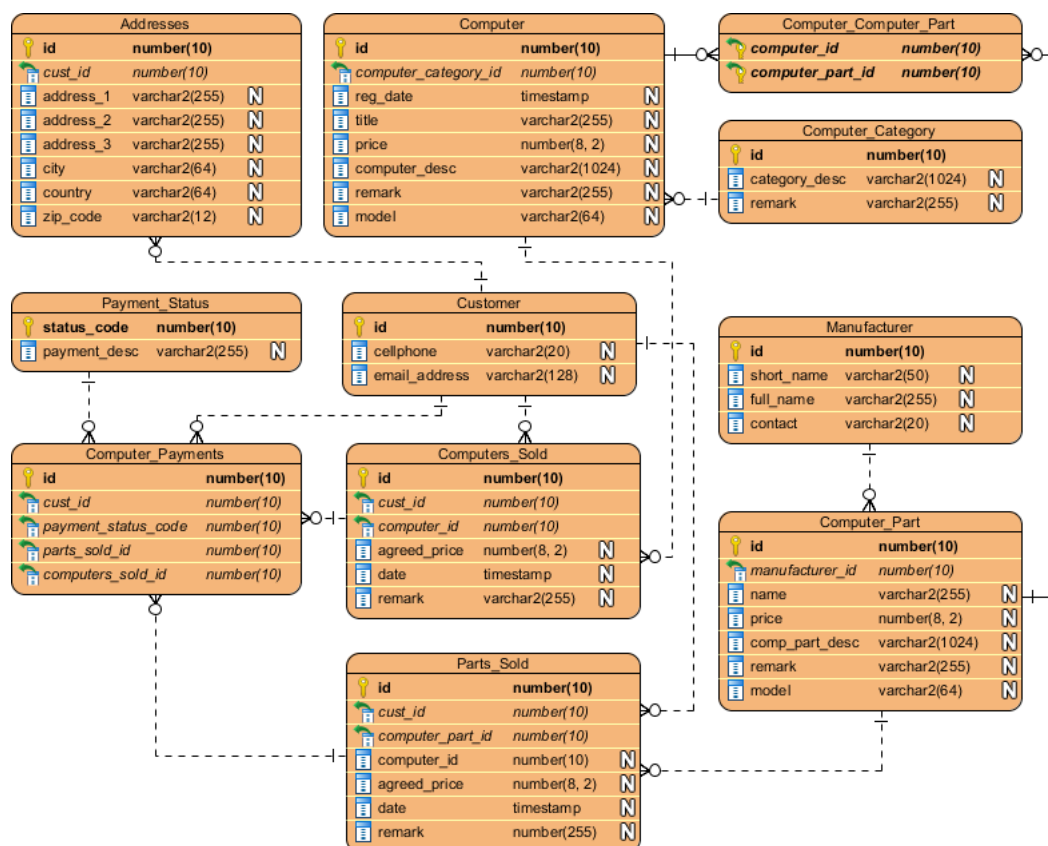
Written Date : March 16, 2016

### Creating an Object Model from an Entity Model

1. Download [Computer Sales.vpp](#). You can also find this file at the bottom of this tutorial, under the **Resources** section.
2. Open the downloaded project file in Visual Paradigm. You can open a project by selecting **Project > Open** from the application toolbar.
3. Before we continue, there is one important point to note here. In this tutorial, we are going to generate ORM code and Hibernate mapping that can work with an Oracle database. It is important to configure the database setting by selecting **Oracle** as your database. Let's check. Select **Tools > DB > Database Configuration...** from the application toolbar. We have selected **Oracle** for you in the **Database Configuration** window. Remember to do this yourself in a real case. Besides, make sure you have entered the connection details as well for actual usage. But to complete this tutorial, we can leave the connection settings unfilled. Let's close the **Database Configuration** now.

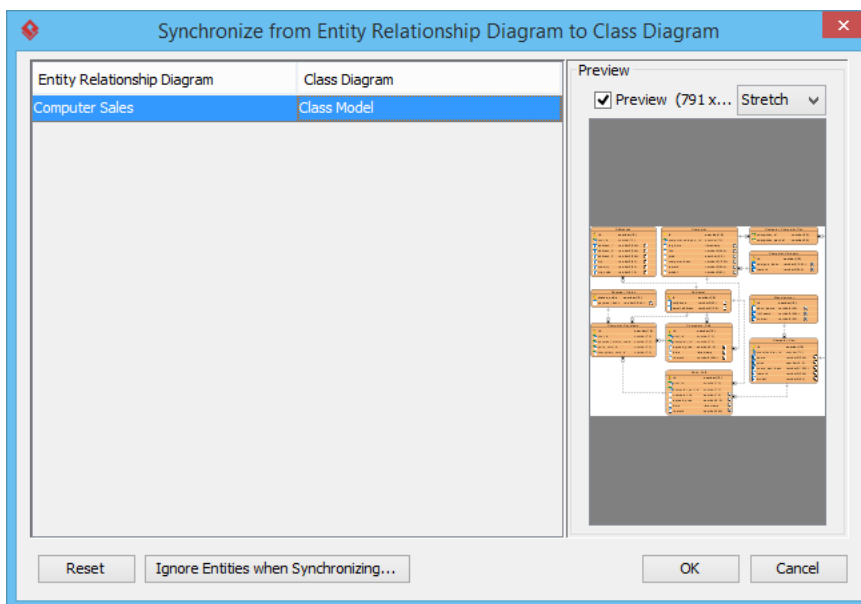


- Open the Entity Relationship Diagram (ERD) *Computer Sales* and take a look. The diagram contains a number of entities related to an ordering system designed for storing computer sales records.

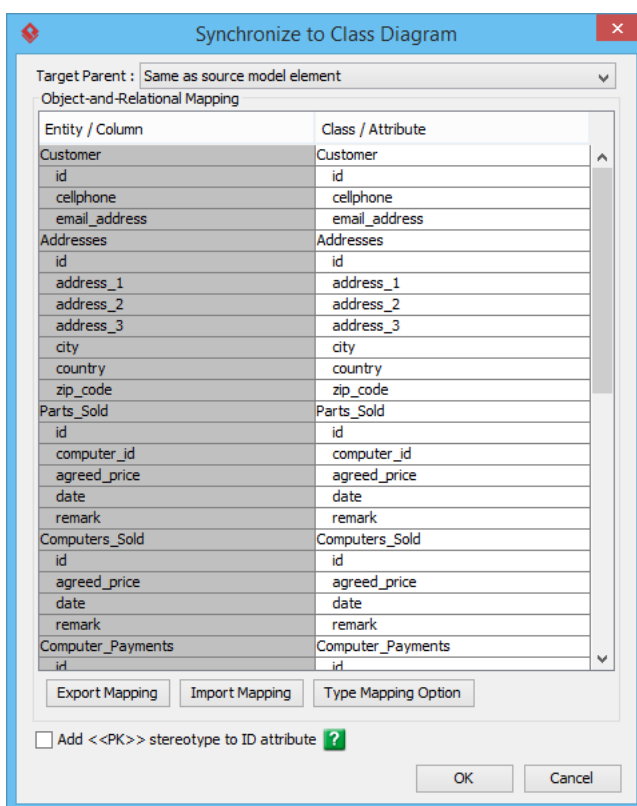


- To generate the Hibernate mapping and ORM source files, you need to synchronize the ERD and class diagram first. Right-click on the ERD and select **Synchronize to Class Diagram**.

- The **Synchronize from Entity Relationship Diagram to Class Diagram** window will appear. Enter *Class Model* as the class diagram name and click **OK**.

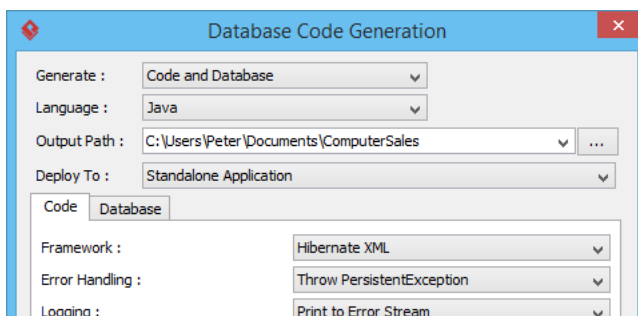


- The **Synchronize to Class Diagram** screen will appear. We will just keep the class and attribute names as suggested. Click **OK** to continue.

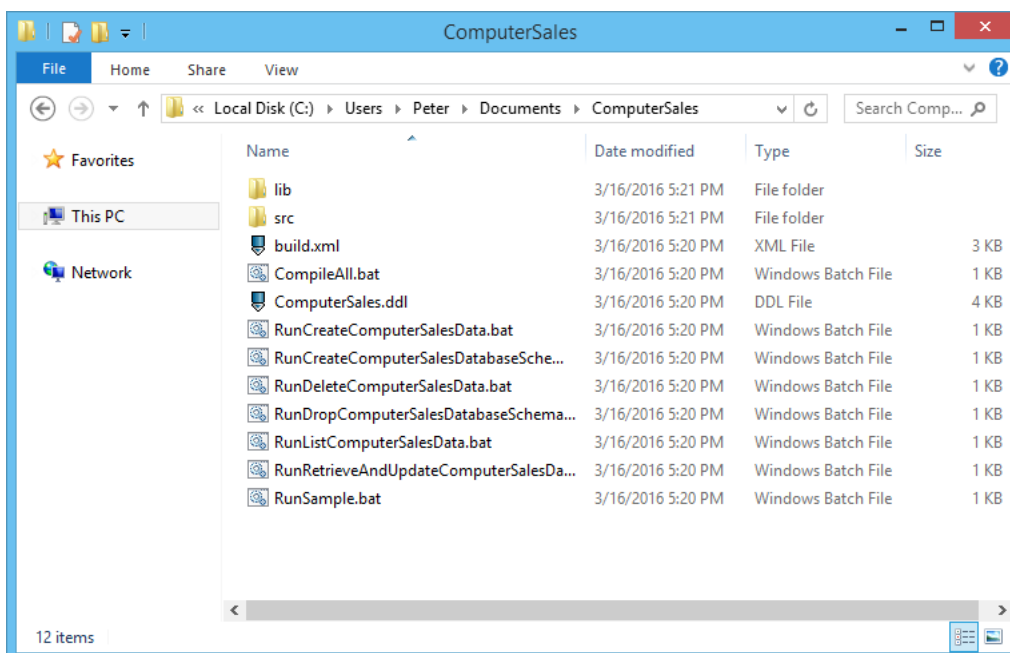




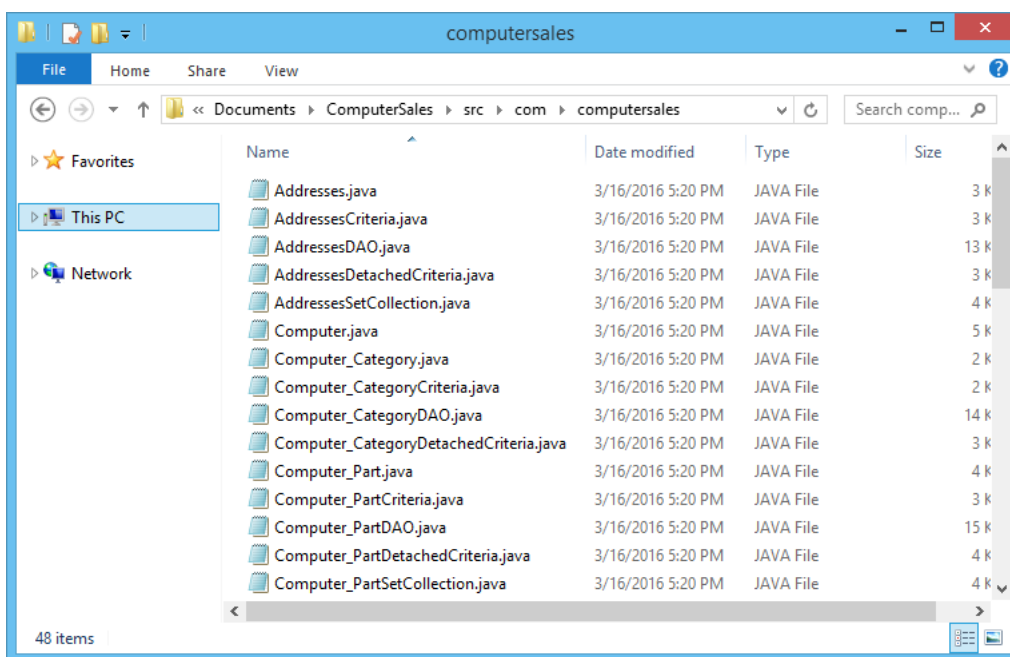
3. In the **Database Code Generation** window, specify the output path of source files, Hibernate mapping files, DDL, and library files.



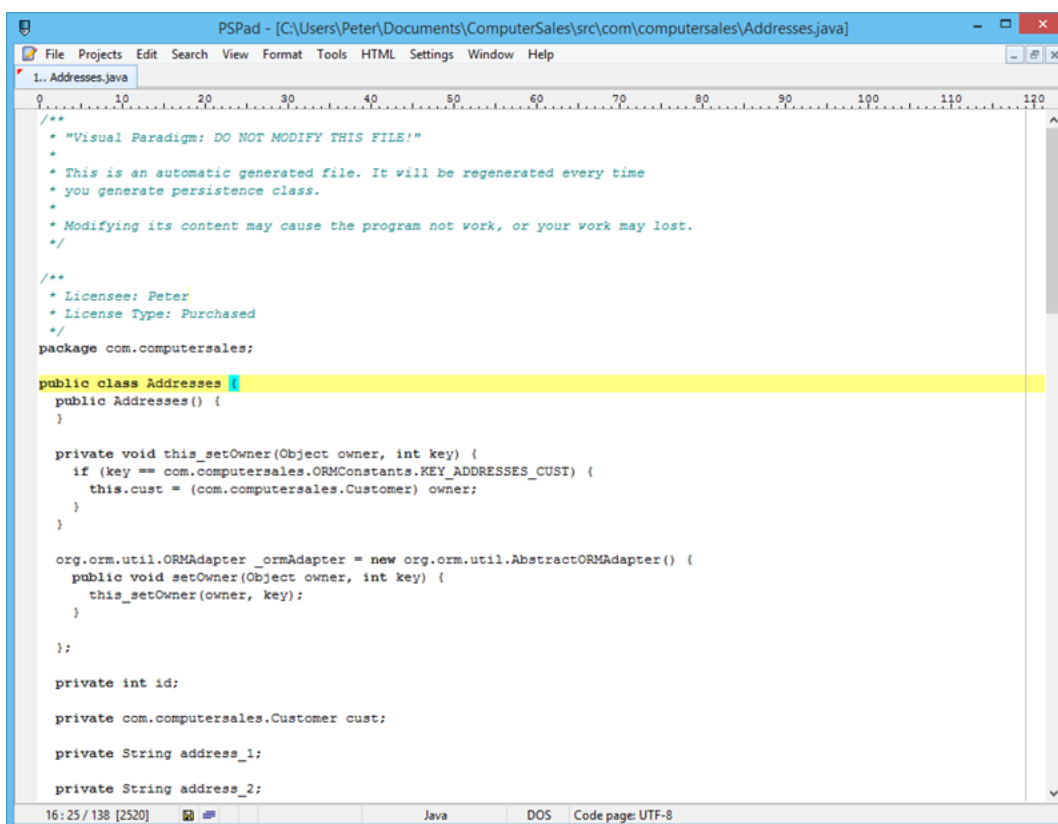
4. Click **OK** to start the generation.
5. Let's take a look at the generated files.



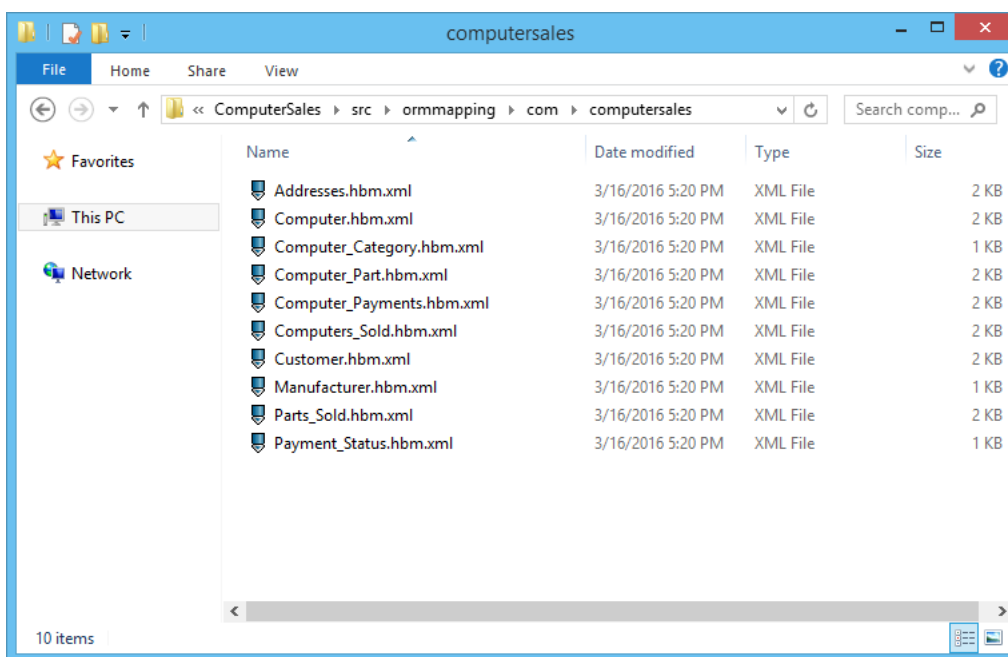
6. The source files are placed at `&#36;{outputPath}\src`.



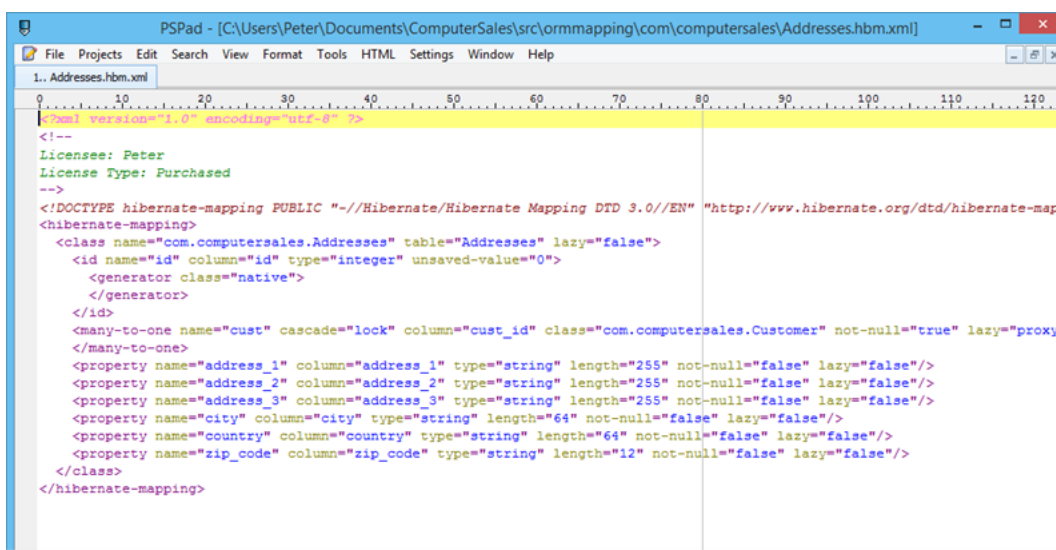
7. Let's open the generated source file.



- The Hibernate mapping files are placed at `&#36;{outputPath}\src\ormmapping`.



- Let's open the generated Hibernate mapping file.



## Resources

- [Computer Sales.vpp](#)

## Related Links

<https://www.visual-paradigm.com/tutorials/generatehibernatemapwithoracledb.jsp>

- [Tutorial - Define Custom Implementations for ORM Persistable class](#)
- [Tutorial - Begin UML Modeling in Eclipse](#)
- [Tutorial - Working with Hibernate in Eclipse](#)
- [User's Guide - Eclipse Integration](#)
- [What is Entity Relationship Diagram \(ERD\)?](#)

Trademark Disclaimer

Oracle is a U.S. registered trademark of Oracle Corporation.



Visual Paradigm home page  
(<https://www.visual-paradigm.com/>)

Visual Paradigm tutorials  
(<https://www.visual-paradigm.com/tutorials/>)