



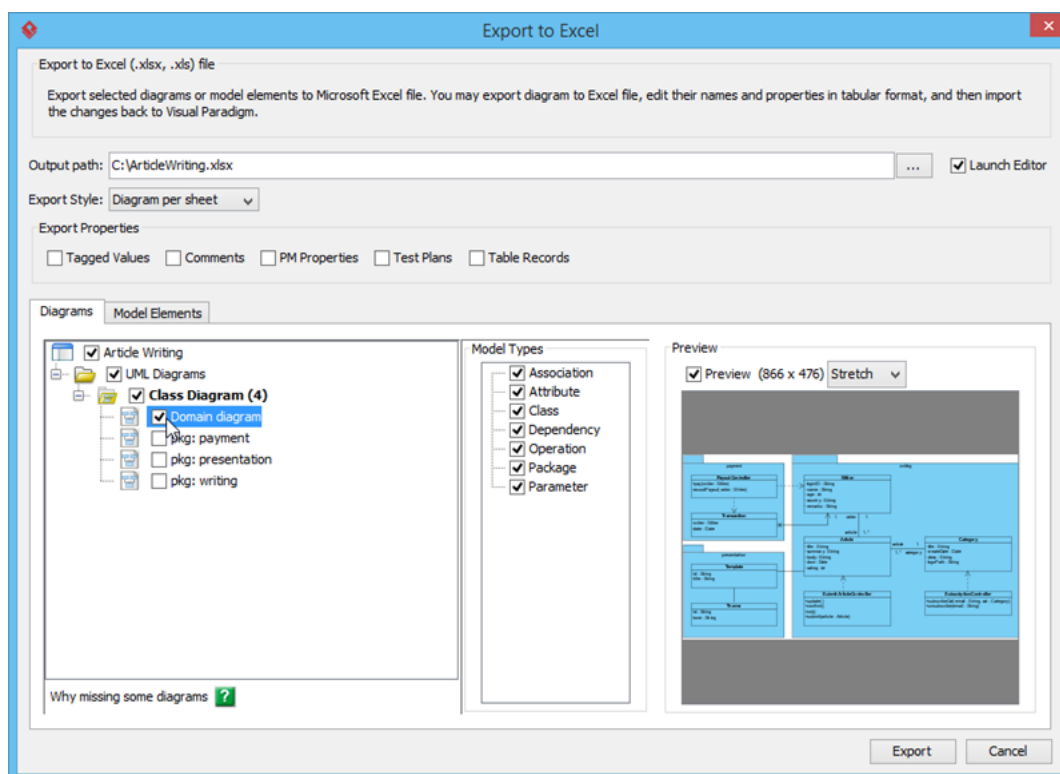
How to Edit Model Elements with Excel?

Written Date : February 02, 2016

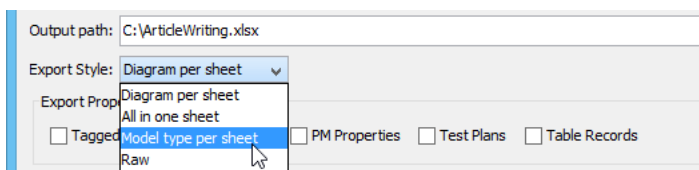
In this tutorial, you will learn how to export several classes into Excel, make changes, and then import the changes back into Visual Paradigm.

Exporting to Excel

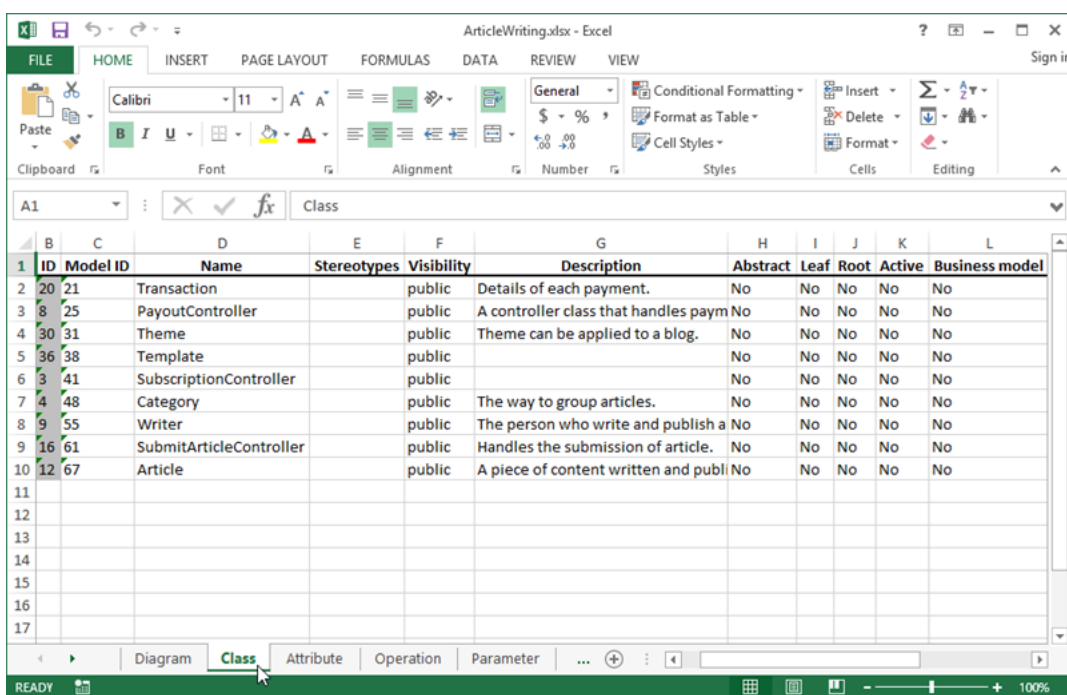
1. Select **Project > Export > Excel...** from the application toolbar.
2. Enter the output path of the Excel file in the **Export to Excel** window.
3. Select the diagram(s) to export to Excel.



4. Select an **Export Style**. We will use **Model type per sheet** for this example.



5. Click **Export**.
6. An Excel file is produced. Open it.
7. Since we selected the "model type per sheet" option, data is organized in each sheet by model type. Open the worksheet **Class**.



- You can then type some formulas to perform calculations. For example, the picture below shows a formula that calculates the sum of classes whose name has "controller" in it.

	B	C	D	E	F	G
1	ID	Model ID	Name	Stereotypes	Visibility	Description
2	20	21	Transaction		public	Details of each payment.
3	8	25	PayoutController		public	A controller class that handles paym
4	30	31	Theme		public	Theme can be applied to a blog.
5	36	38	Template		public	
6	3	41	SubscriptionController		public	
7	4	48	Category		public	The way to group articles.
8	9	55	Author		public	The person who write and publish a
9	16	61	SubmitArticleController		public	Handles the submission of article.
10	12	67	Article		public	A piece of content written and publ
11						
12						
13						
14						
15			Number of controller:		3	
16						

Importing an Excel File

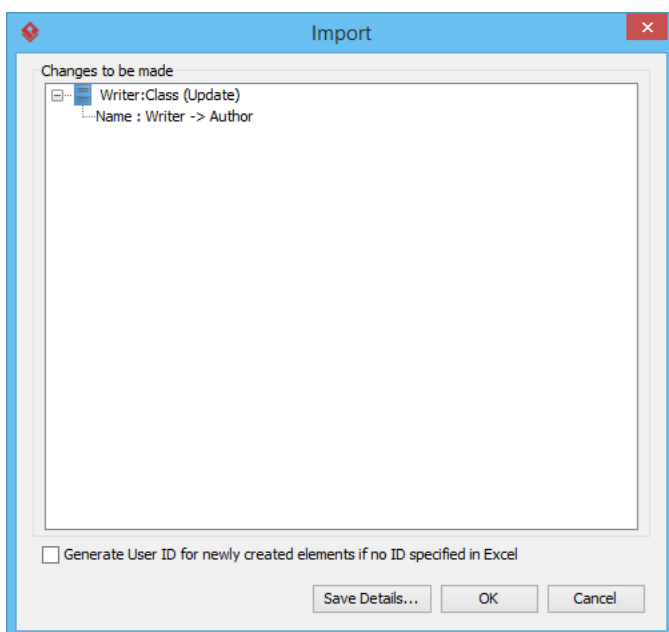
- We can modify the data and then import it back to the modeling tool to update the models. For example, change the class name from "Writer" to "Author".

	B	C	D	E
1	ID	Model ID	Name	Stereotypes
2	20	21	Transaction	
3	8	25	PayoutController	
4	30	31	Theme	
5	36	38	Template	
6	3	41	SubscriptionController	
7	4	48	Category	
8	9	55	Author	
9	16	61	SubmitArticleController	
10	12	67	Article	

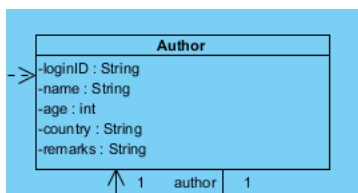
Note: If you want to insert some extra content into the exported Excel file instead of modifying just model properties, make sure it won't disrupt the exported content. Otherwise, the file may not be able to import back to the source project. To avoid disrupting the exported data, enter it in a far-away cell. The best position would be at least the fifth row below the last content.

- Save the file.
- Go back to Visual Paradigm. Select **Project > Import > Excel...** from the application toolbar.

4. The **Import** window shows what changes will be made to the models. Click **OK** to confirm.



5. The model is updated following the change made in Excel.



Resources

1. [Tutorial - Export database design to Excel for mass editing](#)



Visual Paradigm home page
(<https://www.visual-paradigm.com/>)

Visual Paradigm tutorials
(<https://www.visual-paradigm.com/tutorials/>)