

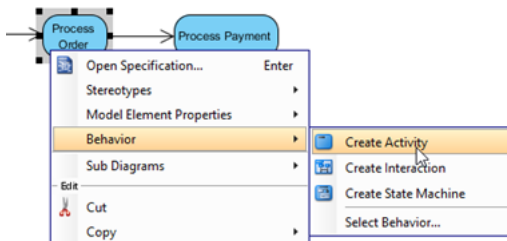


## How to Bridge the Flows between Parent and Sub-Diagrams?

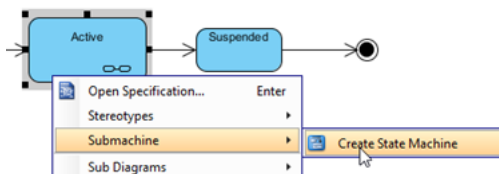
Written Date : January 13, 2015

In version 12.0, the elements for the incoming and outgoing flows are automatically pulled into the sub-diagram when:

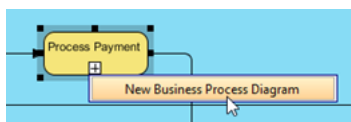
1. Modeling the **behavior of an action** in [UML Activity Diagram](#)



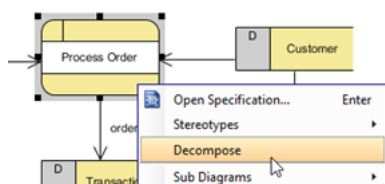
2. Modeling the detail of a **submachine state** in [State Diagram](#)



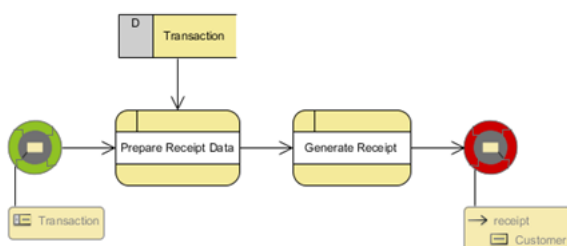
3. Modeling the **detail of a sub-process** in [Business Process Diagram](#)



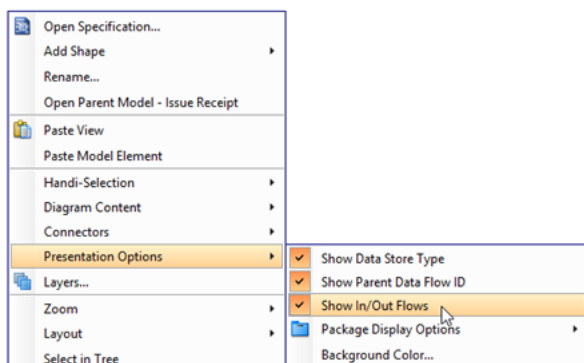
#### 4. Decomposing the process in a [Data Flow Diagram](#)



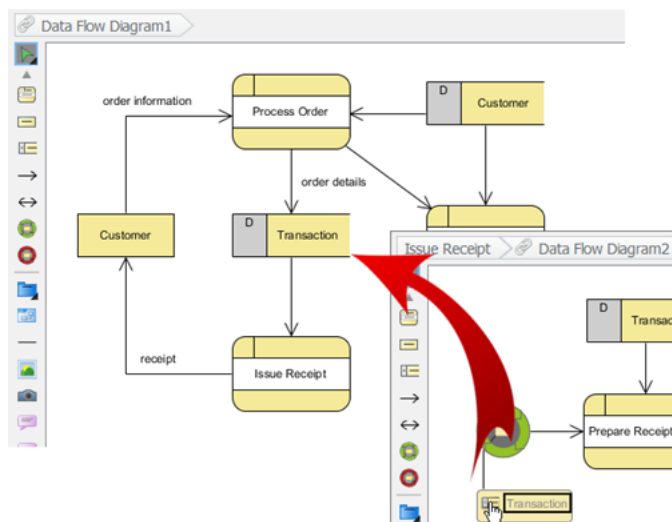
Once the sub-diagram is created and the incoming and outgoing flows are pulled into the sub-diagram, you can then start modeling the sub-diagram from the incoming flow and end with the outgoing flow.



To turn on the in-flow and out-flow indicator, right-click on the blank area of the diagram and select **Presentation Options > Show In/Out Flows**.



Once the in-flow and out-flow indicators are shown, you can navigate to the parent diagram by double-clicking on it.



**Watch This Tutorial on YouTube**  
[Supported In-flow and Out-flow Modeling in Sub-Diagrams](#)

Related Links

- [How to Elaborate Model Element using Sub-diagram](#)
- [How to Define Supplementary Information to Model Elements](#)



Visual Paradigm home page  
(<https://www.visual-paradigm.com/>)

Visual Paradigm tutorials  
(<https://www.visual-paradigm.com/tutorials/>)